

200 WATT Monocrystalline Silicon Module



Production

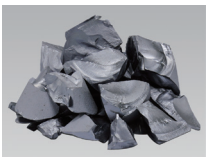
- > Full vertically integrated production line from polysilicon, ingot, wafer, cells to panels
- > Leading polysilicon producer of 9N Grade
- > German designed automatic production line for solar cells

Products

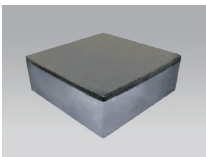
- > Clean Energy Council approved
- > PID Free (TUV)
- > Positive power tolerance (0-3 %)
- > Excellent performance under low light environment
- > All modules are double EL tested for superior quality control
- > Mechanical resistance to withstand snow load (up to 5400 Pa)
- > Compliant with IEC 61215 and IEC 61730
- > Certified by TUV and UL/CUL
- > Flash report and embedded bar code ID for complete traceability

Vertical Integration

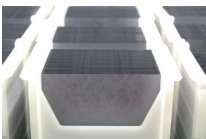
Vertical integration and economy of scale make DAQO a secured supply, stable quality, and cost competitive solution.



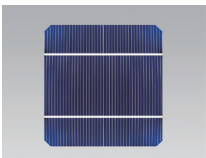
Polysilicon
7300 MT capacity



Ingot
250 MW capacity



Wafer
250 MW capacity



Cell
250 MW capacity



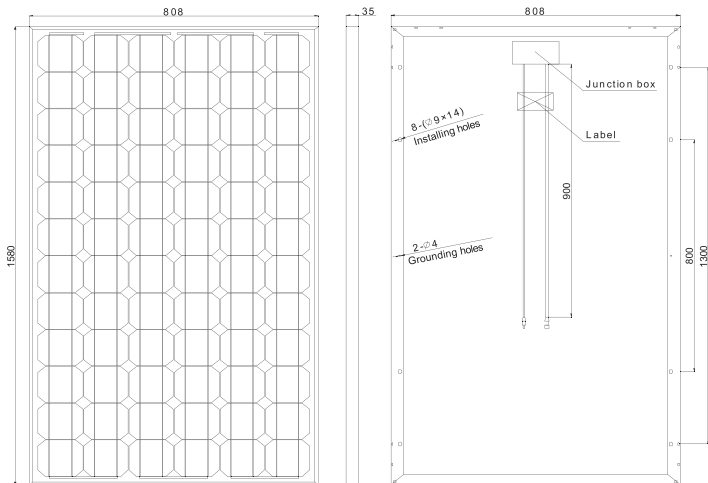
Solar Module
250 MW capacity

About DAQO

- > NYSE listed company
- > Belongs to DAQO Group with a 48-year history in electronics manufacturing
- > Heavily diversified in renewable energy, electric, environmental protection and transportation
- > 7 joint ventures, partnering with Siemens, Moeller, Eaton, Secheron, NKT
- > State-level enterprise technical center
- > Chinese electrical industry leading enterprise
- > Chinese machinery industry top 100 enterprise
- > National postdoctoral scientific research workstation



Dimensions



All measurements in mm

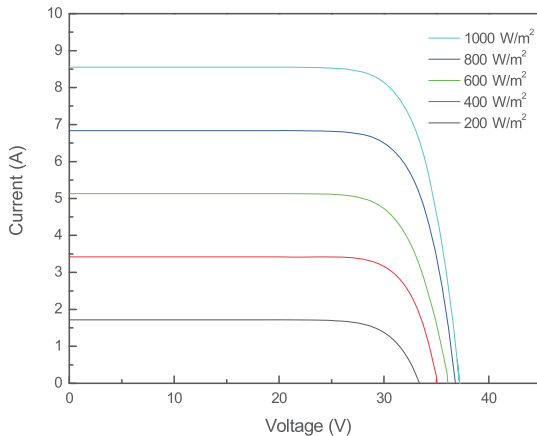
Electrical Characteristics

Module efficiency:	15.5 %
Cell efficiency:	17.6 %
Rated Maximum Power (Pmax):	200 W
Current at Pmax (Imp):	5.45 A
Voltage at Pmax (Vmp):	36.7 V
Short-Circuit Current (Isc):	5.65 A
Open-Circuit Voltage (Voc):	45.4 V

Temperature Characteristics

Nominal Operating Cell Temperature (NOCT):	45±2 °C
Power Temperature Coefficient:	-0.40 %/K
Open-Circuit Voltage Temperature Coefficient:	-0.31 %/K
Short-Circuit Current Temperature Coefficient:	0.06 %/K

I-V Curves of PV Module



Mechanical Specifications

Cell Type:	125 x 125 mm Mono-crystalline
Cell Configuration:	72 (6 x 12) PCS in series
Dimensions:	1580 x 808 x 35 mm
Weight:	15 kg
Front Glass:	3.2 mm, high transmission, low iron, tempered glass
Junction Box:	IP65 rated
Cables:	4.0 mm², 900 mm long, genuine MC4 connectors
Frame:	Anodised aluminium-alloy

Maximum Ratings

Operating Temperature:	-40...+85 °C
Storage Temperature:	-20...+40 °C
Maximum System Voltage:	TUV 1000V DC UL 600V DC

Packing Configuration

Packing Configuration:	29 pcs / Pallet
Loading Capacity:	812 pcs / 40 ft

All Technical Data at STC: AM1.5 E=1000 W/m² Tc=25 °C

Warranty

10 year warranty on materials and workmanship
25 year linear output warranty
Products insured by 3rd party insurance company, Chubb
Provisions warranty

